



INSPIRATION 70's Chic Mountain

Audrey Hepburn Defined Late 60's Early 70's Clean and Classic Mountain look. When the rest of the world was experimenting with garish color and pattern this timeless style and clean line stood apart from the rest.



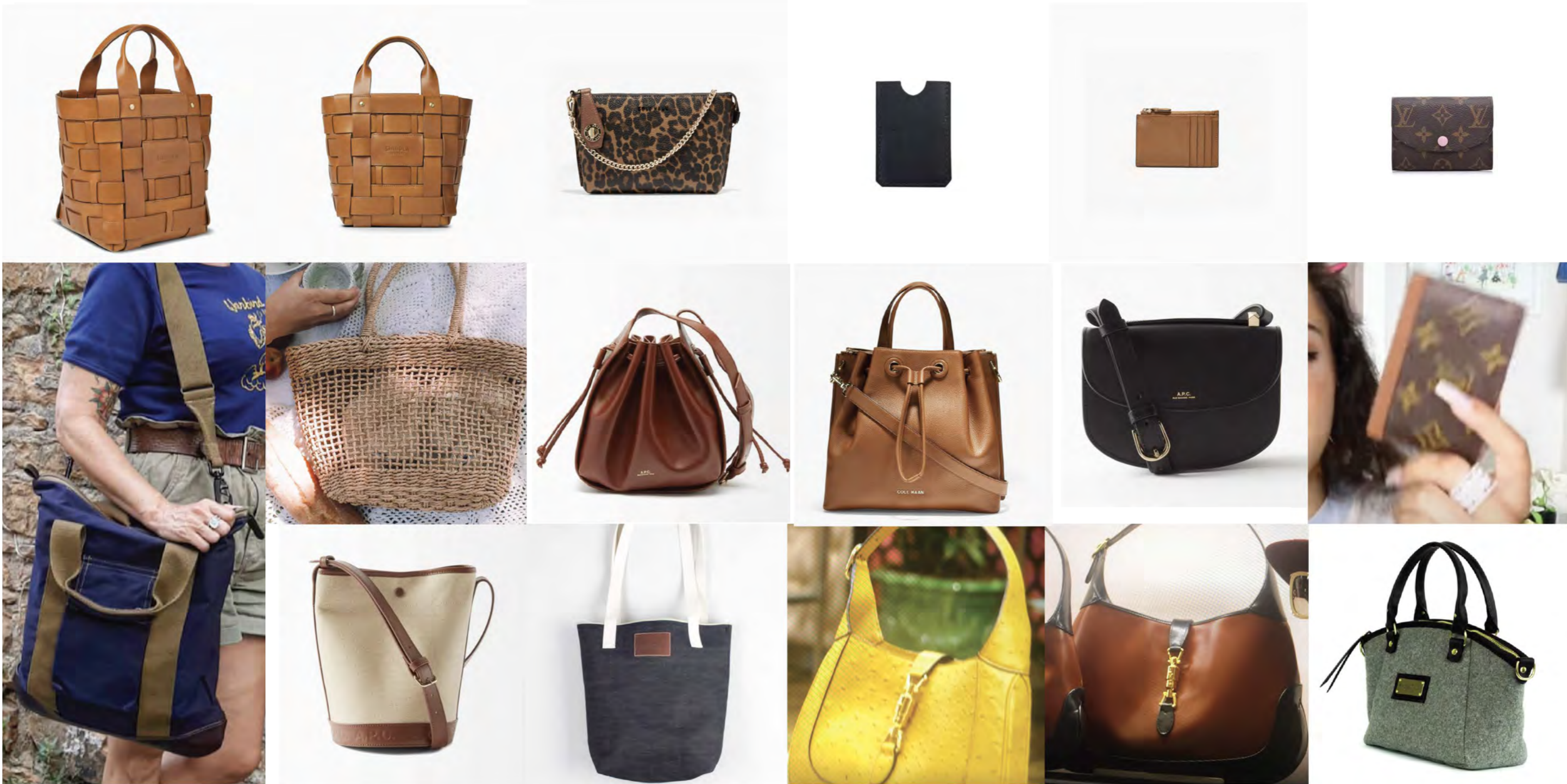
INSPIRATION 70's Mountain Chic



INSPIRATION 70's Mountain Chic Quality of design, material and construction meant to last a lifetime.



INSPIRATION 70's Mountain Chic Boots



INSPIRATION 70's Mountain Chic Bags



INSPIRATION 70's Mountain Sharp. Paul Newman and Robert Redford defined Classic Ski Style in the 70's. Their bold choices, clean line and crisp silhouette are reflected in Today's modern aesthetic. Simple, clean, beautiful. A sharp casual style that has stood the test of time.



INSPIRATION 70's Mountain Sharp. Quality of design, material and construction meant to last a lifetime.



INSPIRATION Mountain Sharp, vintage finish, Waxed cotton, simple stripes and clean lines



INSPIRATION 70's Mountain Sharp Bags



INSPIRATION Where is the Wingtip?



INSPIRATION 70's Mountain Sharp Classic Hike and Engineer.

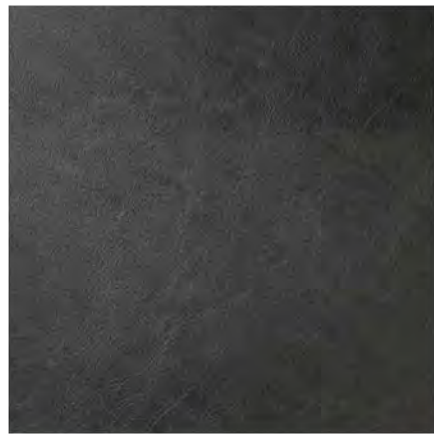
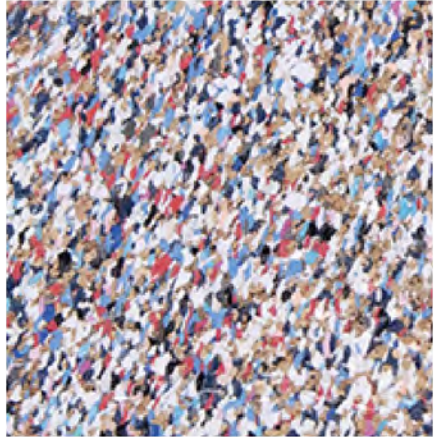
Bio Engineered



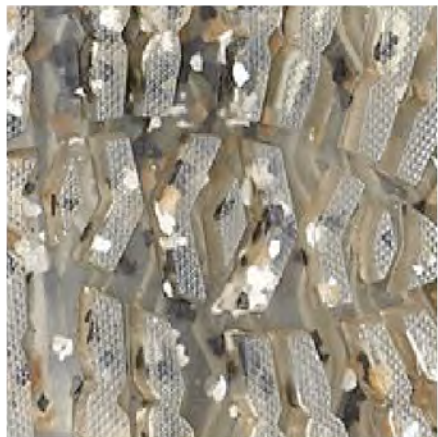
Sustainable Cork



Reground waste.



Reground waste.



INSPIRATION 70's Mountain Sharp Materials.

Leather. For the Renderings I used Colors and Leather finishes that are currently part of Nisolo Iconic DNA. Future exploration into different finishes and textures could be amazing.

CORE

LEATHER NATURAL TAN 13-10001	LEATHER MERRELL OAK 15-0955	SYNTHETIC LEATHER TEXTILE EVA MOONBEAM 13-10001	SYNTHETIC LEATHER TEXTILE MOON ROCK 17-1210	LEATHER TEXTILE FALCON 18-1304	LEATHER TEXTILE BRACKEN 19-1015	LINING / CK MESH SYNTHETIC LEATHER TEXTILE LYCRA BINDING EVA ESPRESSO 19-0915
		LINING / CK MESH SYNTHETIC TEXTILE LYCRA BINDING EVA OYSTER GRAY 14-1107	TEXTILE SEPIA TINT 17-1314	LEATHER TEXTILE DARK EARTH 19-1020	LEATHER TEXTILE BUTTERNUT 18-0830	LEATHER TEXTILE KANGAROO 18-0920
		SYNTHETIC LEATHER TEXTILE EVA SILVER BIRCH 12-4403	SYNTHETIC LEATHER TEXTILE EVA SILVER LINING 14-4501	SYNTHETIC LEATHER TEXTILE EVA ALUMINUM 16-1107	LINING / CK MESH SYNTHETIC LEATHER TEXTILE LYCRA BINDING EVA BRINDLE 18-1110	SYNTHETIC LEATHER TEXTILE EVA BOULDER 18-0513
					LINING / CK MESH SYNTHETIC LEATHER TEXTILE LYCRA BINDING DUSTY OLIVE 19-0515	LINING / CK MESH SYNTHETIC LEATHER TEXTILE LYCRA BINDING EVA BELUGA 19-0405
LINING / CK MESH SYNTHETIC TEXTILE LYCRA BINDING EVA HIGH RISE 15-4101	SYNTHETIC TEXTILE MONUMENT 17-4405	SYNTHETIC LEATHER TEXTILE PALOMA 16-0000	SYNTHETIC LEATHER TEXTILE CHARCOAL GREY 18-0601	LINING / CK MESH SYNTHETIC LEATHER TEXTILE LYCRA BINDING EVA CASTLEROCK 18-0201	SYNTHETIC TEXTILE TURBULENCE 19-4215	LINING / CK MESH SYNTHETIC LEATHER TEXTILE LYCRA BINDING EVA GRANITE 19-3906
			Seasonal			
		LEATHER TEXTILE MARRON 18-1415	LEATHER TEXTILE BURLWOOD 17-1516	LEATHER MERRELL CAMEL 17-1327	LEATHER TOBACCO BROWN 17-1327	TEXTILE INCENSE 16-1010
		LEATHER TEXTILE CATHAY SPICE 18-0950	LINING / CK MESH SYNTHETIC LEATHER TEXTILE LYCRA BINDING NARCISSUS 16-0950	SYNTHETIC LEATHER TEXTILE ANISE FLOWER 12-1007		

WOMENS



MENS



NISOLO COLOR PALETTE

Note. This Shoe is not really part of the project but after looking at the line I took a swing at doing a Nosolo wingtip. Perfs and stitch on a clean vamp. If it is possible to get a Nice enough shape in the heel I would do that in the counter also,









too much color but I had to see what it looked like



A cross between a hiker and combat boot.
Blown rubber outsole with deep traction



Nisolo Women's Nouvo Mountain hiker. Color options



Nisolo Women's Classic Mountain hiker. Sherling lined



+





Note. This bag is not really part of the inspirational thread but it was such a fun idea I had to draw it out.



Inside option 1



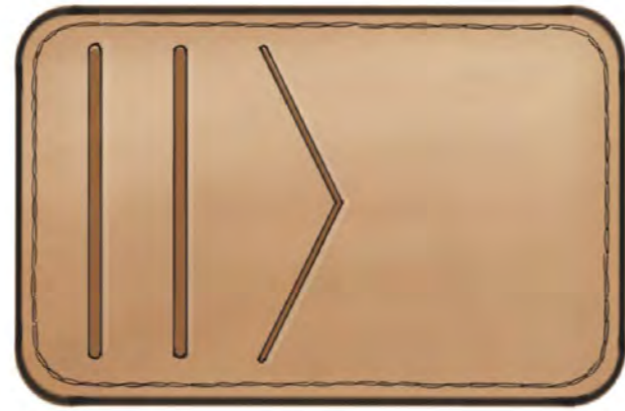
Inside option 2



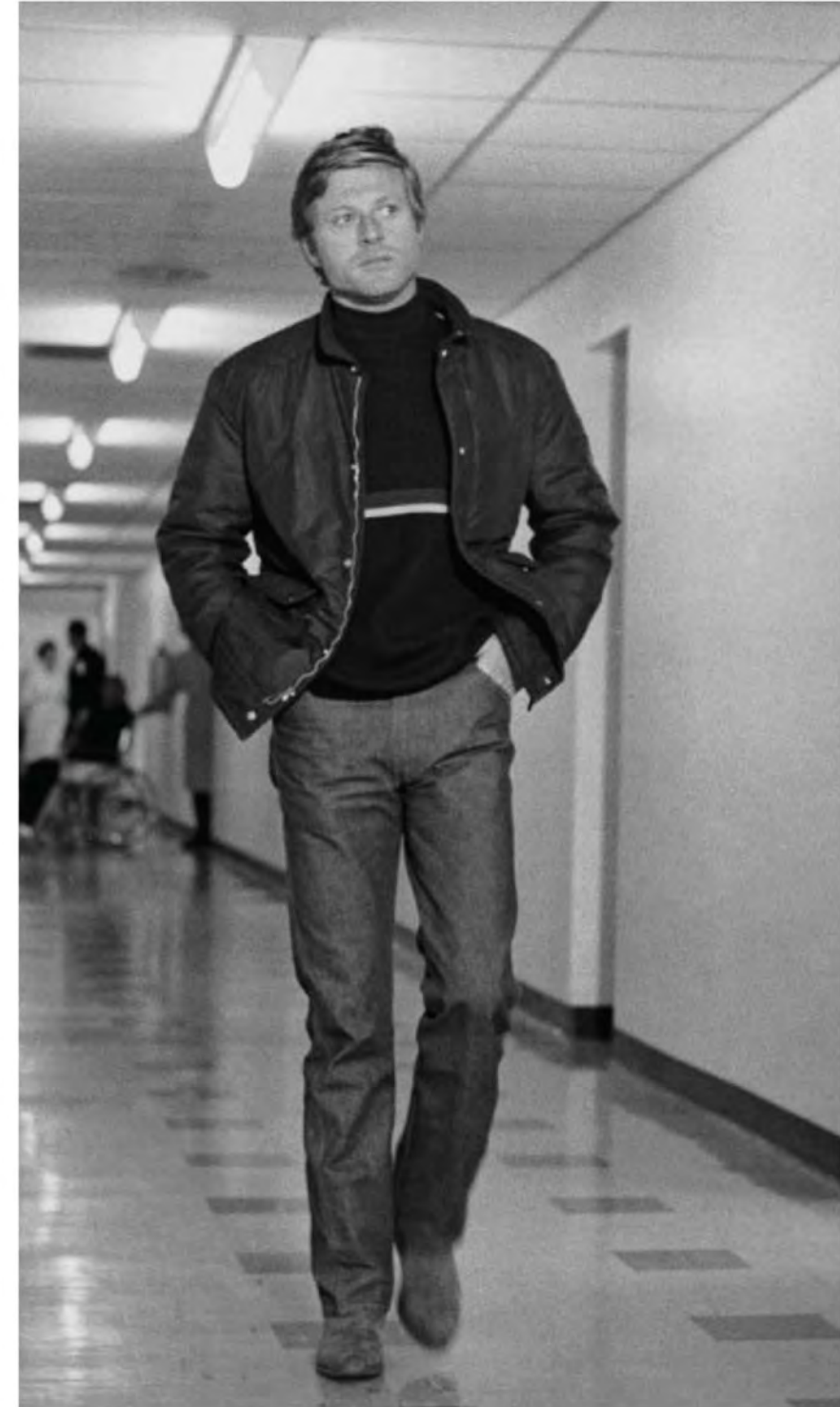
center seam



overlap
seam









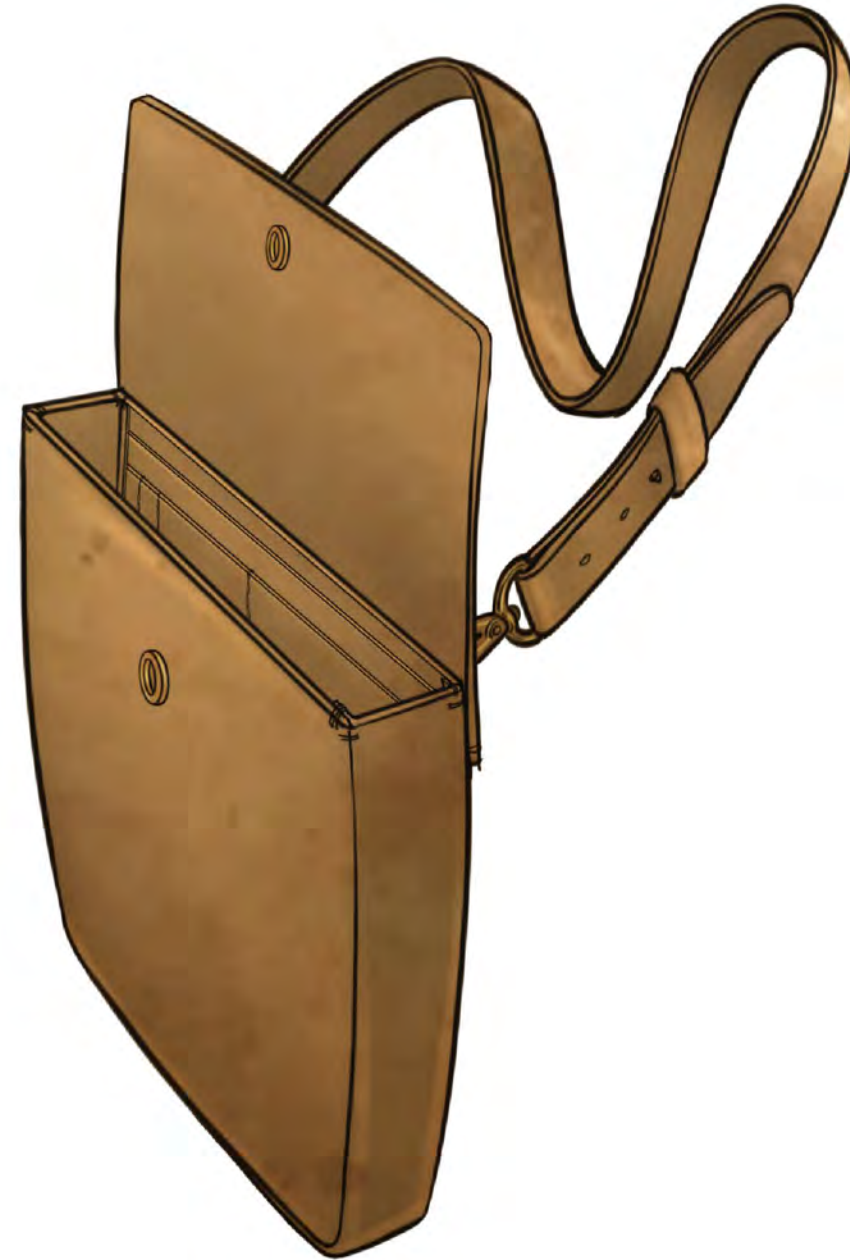
Soft leather upper.
instant break in
Cork midsole
Blown rubber outsole







Just big enough for Ipad pro



loops are anchors for
spring loaded hooks on
backpack straps





Tech Pack and Tooling Example

